

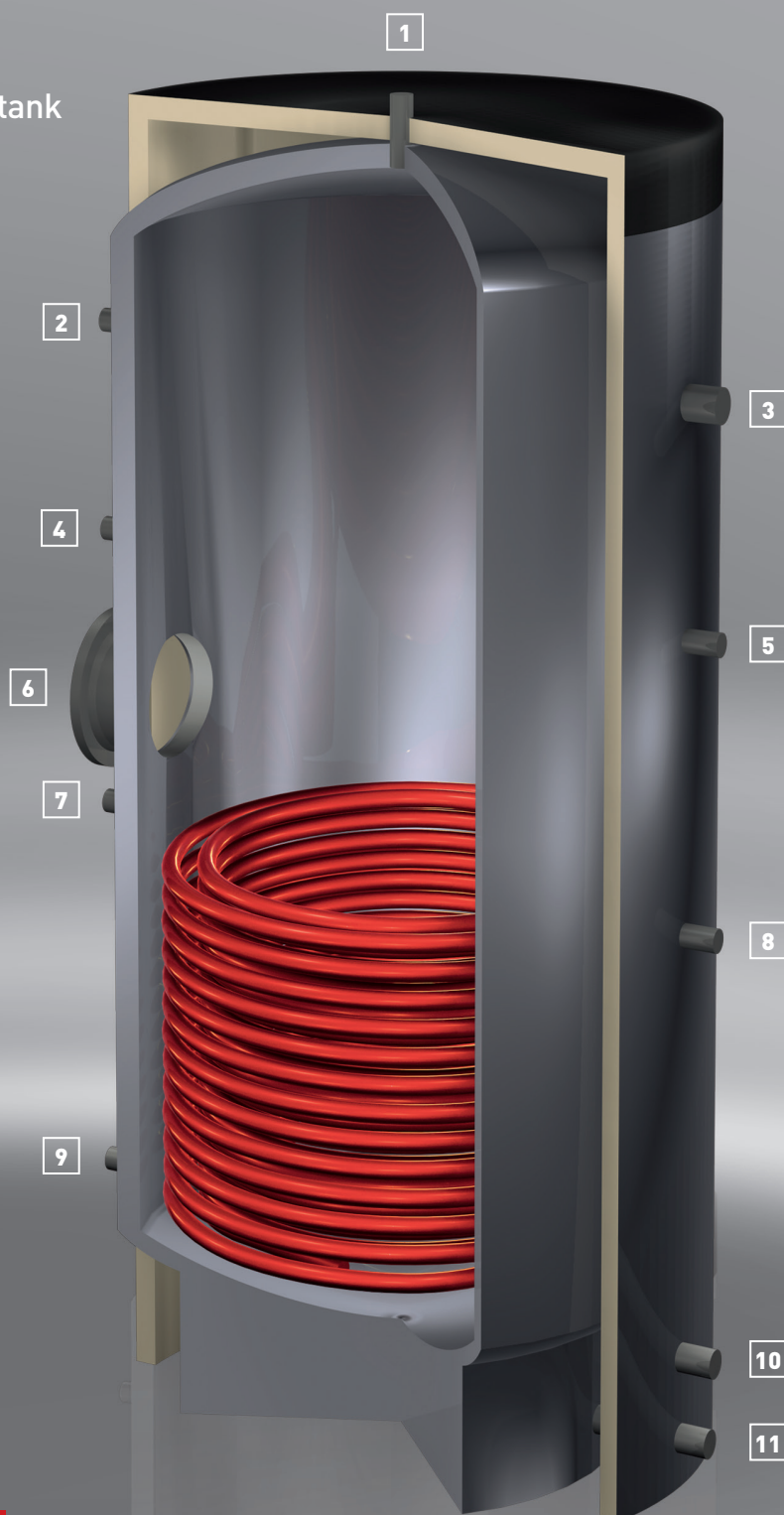
R-HLS

Stainless steel high performance tank

- 1 Ventilation
- 2 Thermometer
- 3 Warm water
- 4 Thermostat
- 5 Circulation
- 6 Revision opening
- 7 Thermostat
- 8 Heating water flow
- 9 Thermostat
- 10 Heating water return
- 11 Cold water

Application area:

- ! District heating
- ! Heat recovery
- ! Boilers



R-HLS

INFORMATION

- ┃ Max. working pressure: 10 bar / 20 bar
- ┃ Max. working temperature: 95° C / 200° C
- ┃ Material: 316 Ti / 316 L
- ┃ Standard insulation: Neodul insulation with Polystyrene cladding
- ┃ Upgradable with electric heater through revision opening

Note

- ┃ Connections and connection measurements on the production drawings
- ┃ Manufacture of custom sizes on demand
- ┃ All insulations fulfill fire resistance class B2 and are removable

TYPE		160	200	300	400	500	750	1000
Technical data								
Volume	l	172	212	289	411	490	756	990
Diameter without insulation	mm	500	500	500	600	600	750	850
Revision opening	mm	120/180	120/180	120/180	120/180	120/180	120/180	120/180
Total height with insulation	mm	1.240	1.490	1.740	1.735	1.985	2.075	2.075
Tilt height without insulation	mm	1.150	1.395	1.645	1.690	1.940	2.040	2.050
Weight	kg	66	79	96	128	139	185	208
Heating surface	m ²	1,4	1,8	2,6	3,8	4,0	5,0	7,0
Performance indicator (NL)	60° C	2,8	4,8	11,6	21,7	29,7	48,7	61,6
Neodul insulation	mm	100	100	100	100	100	100	100
Energy efficiency class		B	B	B	C	C	C	C